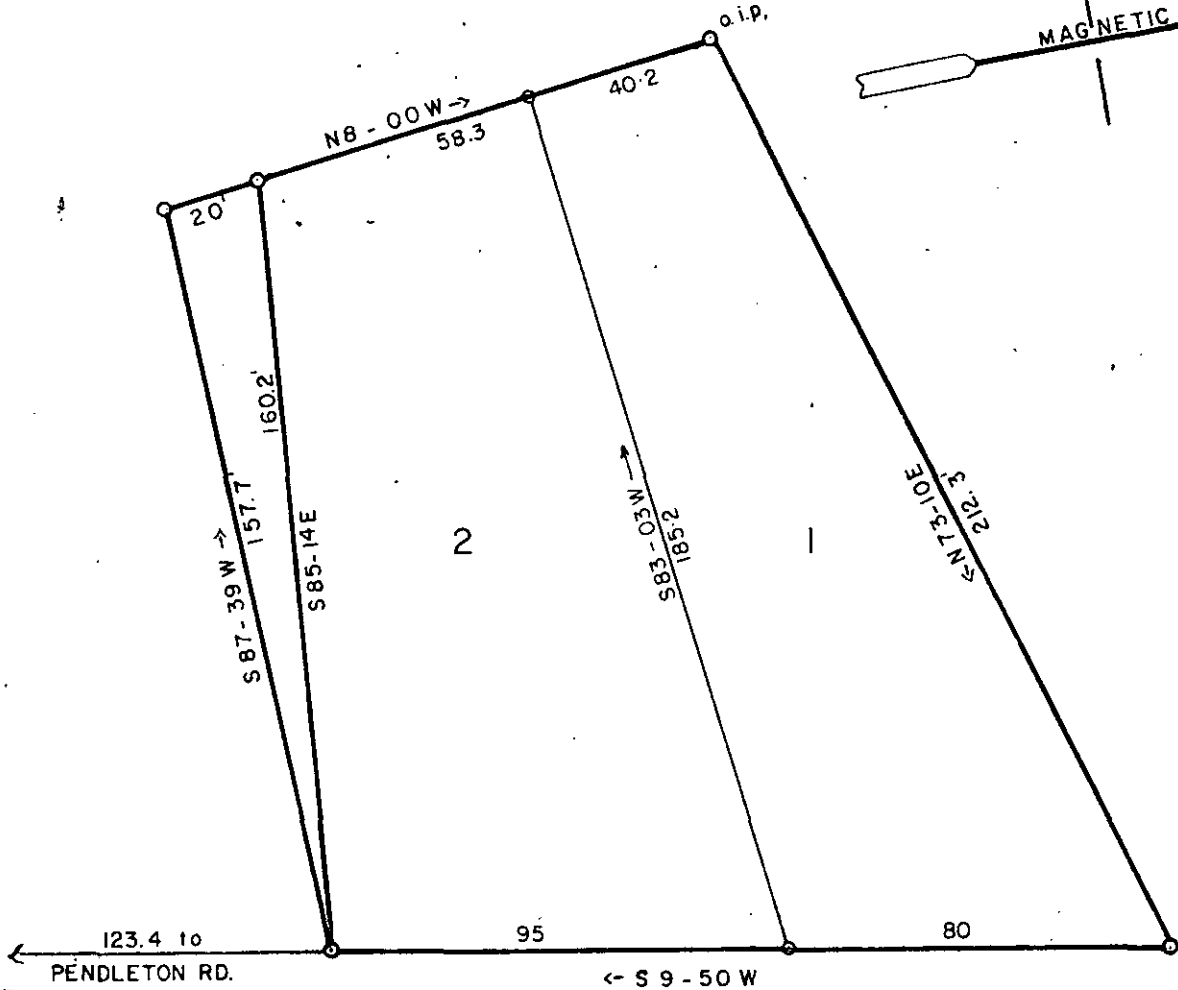
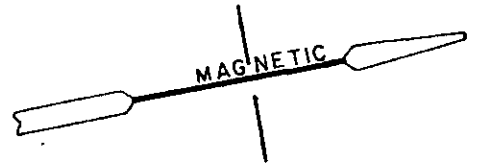


MICROFILMED

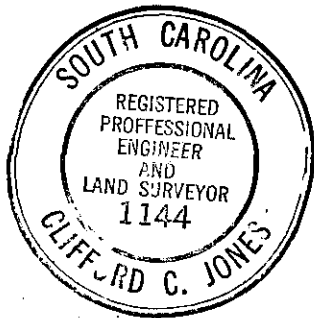


SPRUCE ST.

THIS PLAT IS NOT A SUBDIVISION AS DEFINED BY THE GREENVILLE COUNTY SUBDIVISION REGULATIONS.

Anthony B. Currell
Chairman, Secretary, or Director of Planning.
Greenville County Planning Commission

8-1-1978



PROPERTY OF
H. R. LOLLIS
GREENVILLE COUNTY, S.C.
SCALE 1"=40' AUG 17 1978

FILED
GREENVILLE CO. S.C.
AUG 18 11 14 AM '78
DONNIE S. TANKERSLEY
R.M.C.

✓ 6-5-62

5381

AUG 18 1978